



2yrs b4 treatment
(thinned out more than this)



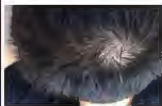
approx 12 months
after beginning



approx 18 months
after beginning
- looking great (2006)

→ ← ↗ ↘

Maintained hair well for over 6 years using program on and off
with just receding but no noticable loss in crown or vertex.



2011 - after a 4 month break



Early 2012 w/ 5 months back on
- looking good...



TODAYS SCENARIO (10yrs on)



Most recent shots after another 4 month break
during massive shed



(with half wet hair)

